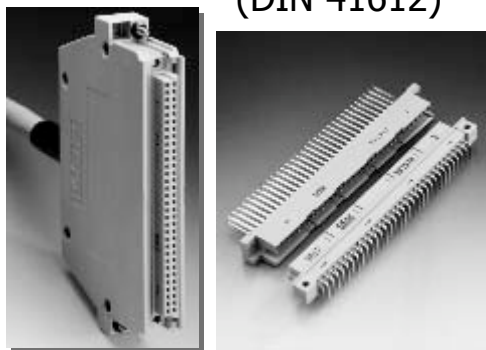


2 x 64 pin connectors (DIN 41612)

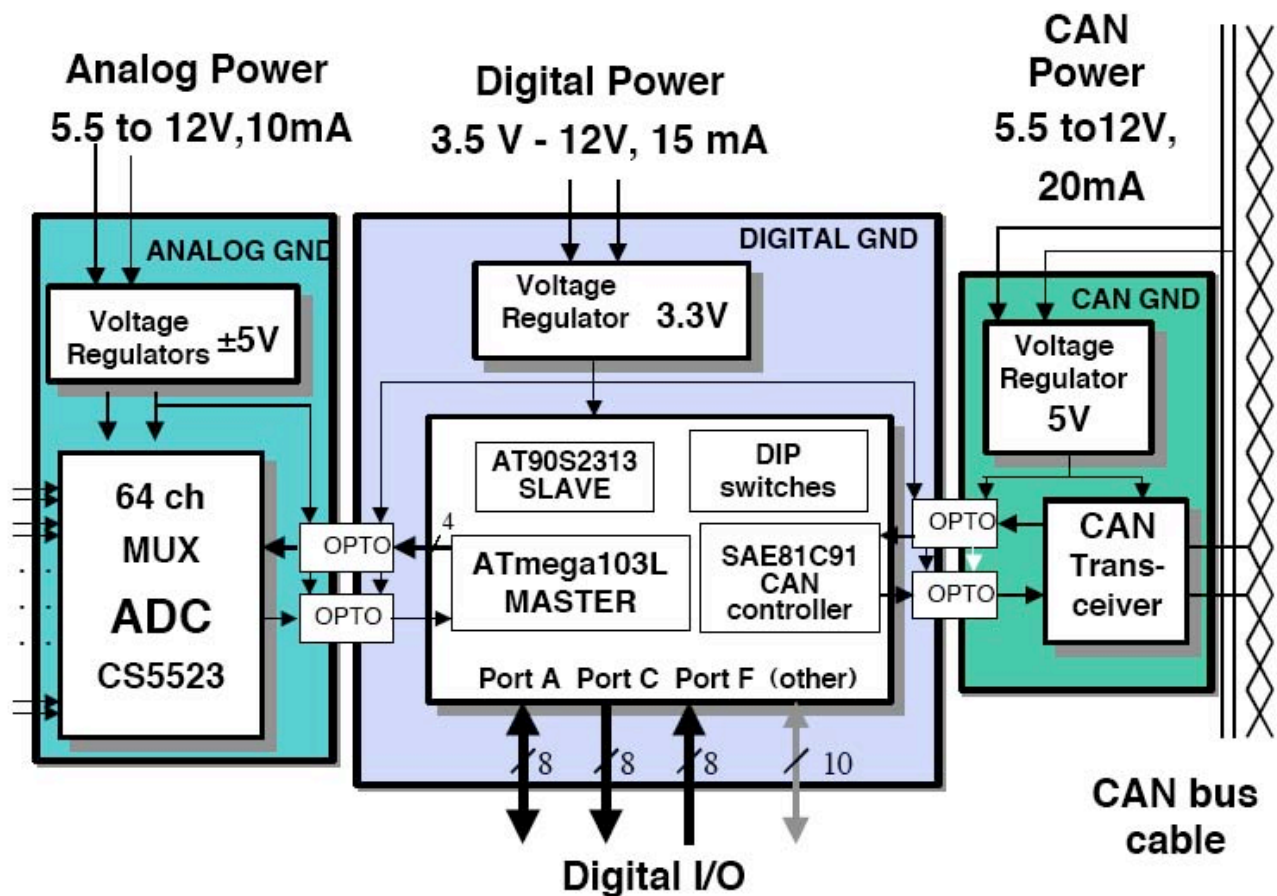


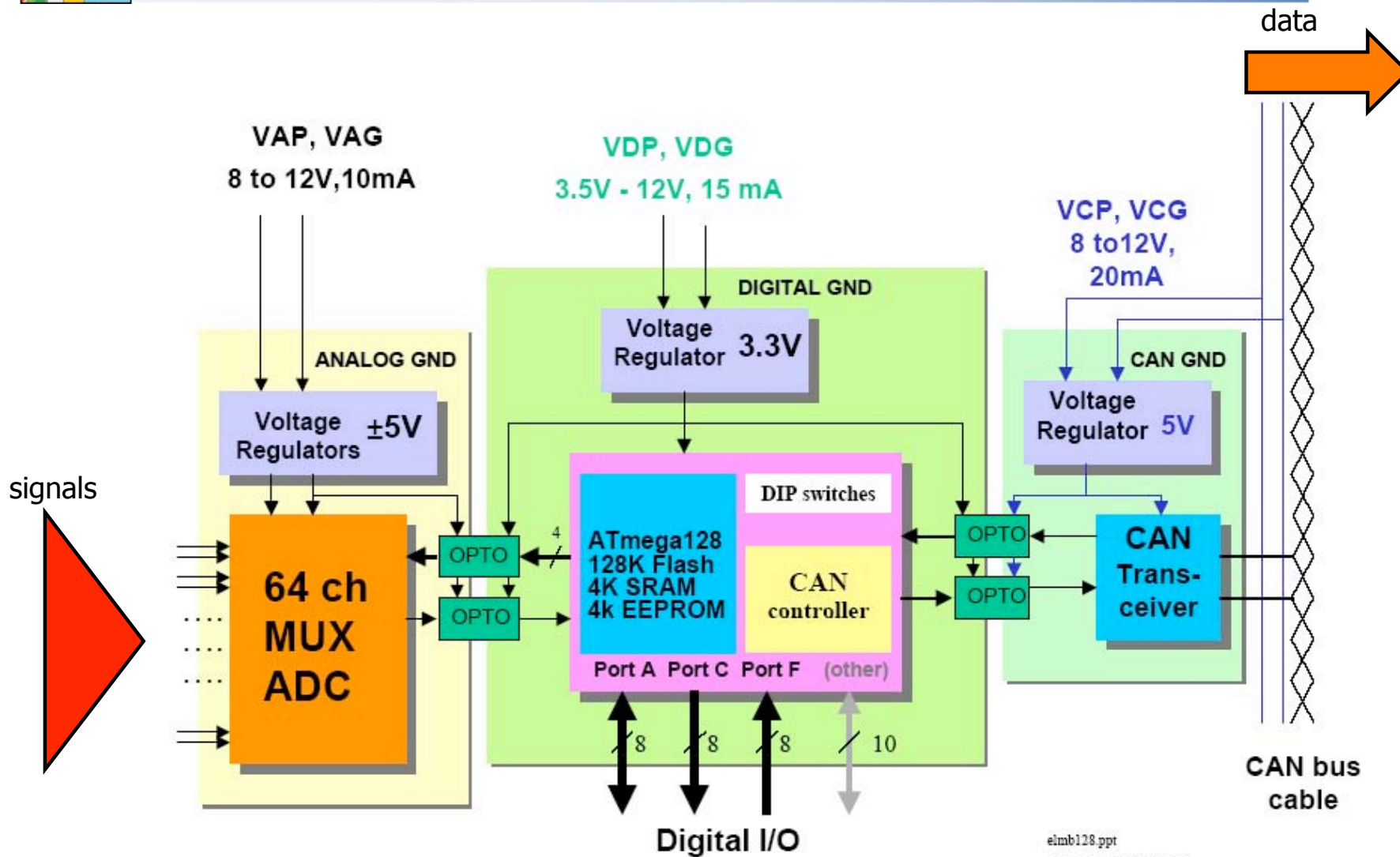
ELMB = Embedded Local Monitor Board (ATLAS):

- 64 channel sigma-delta ADC (16 bit)
- Programmable microcontroller
- CANbus interface + CANopen protocol
- 8 + 16 digital I/O lines

(*) -- Position ID: each backplane connector is prewired with a unique binary code which identifies crate and position inside the crate. ELMB reads this code via digital inputs and sends to PVSS in order to build the mapping "ELMB_xx – crate/position".

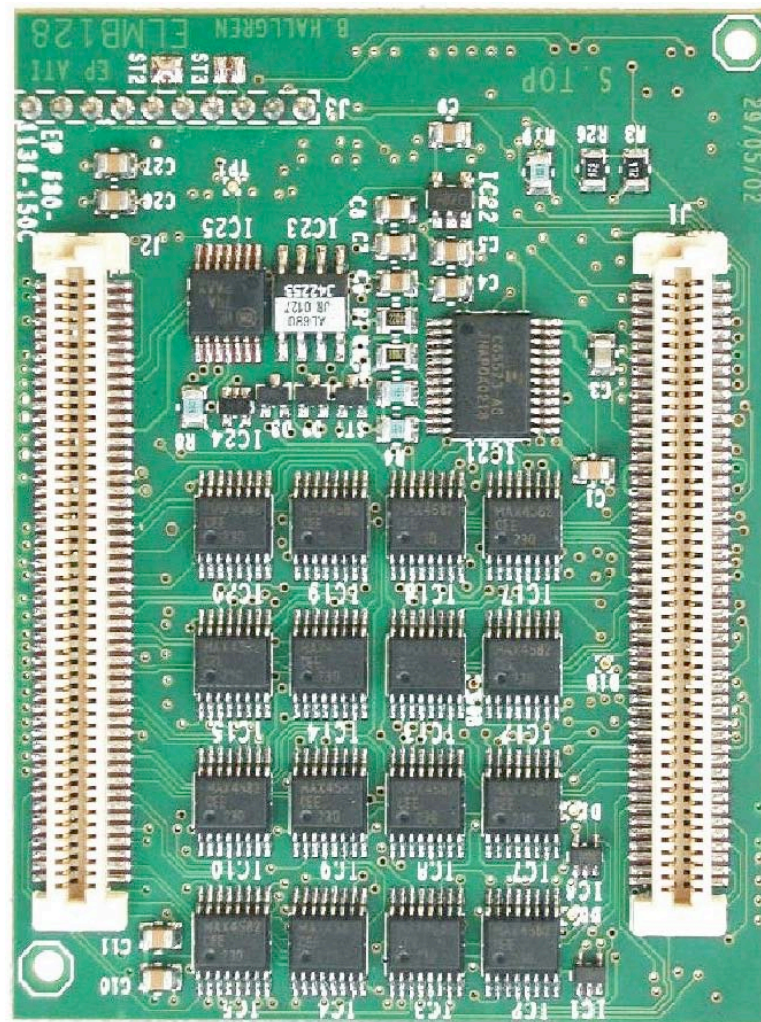
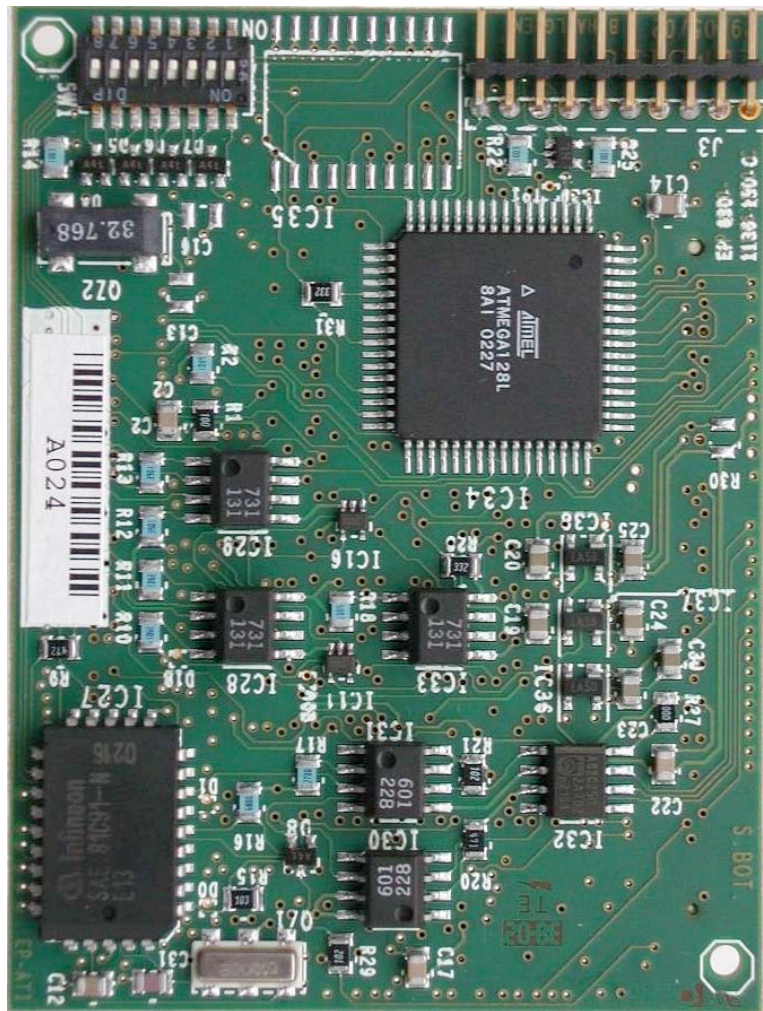
- Based on ATLAS ELMB (Embedded Local Monitor Board)
 - ◆ see <http://atlas.web.cern.ch/Atlas/GROUPS/DAQTRIG/DCS/ELMB/elmb.html>



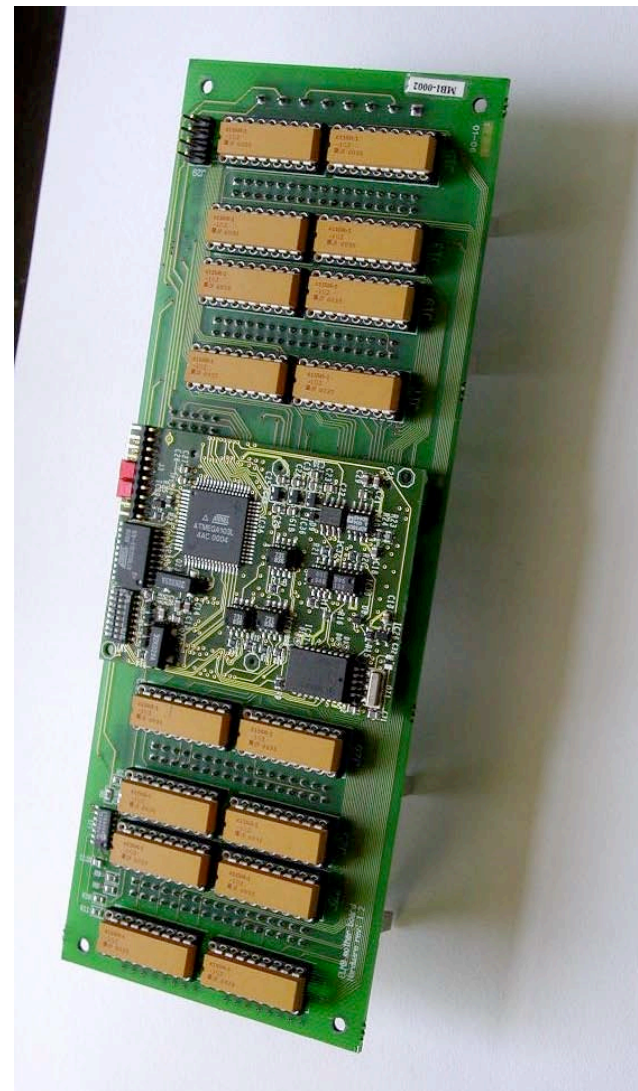


eimb128.ppt
ATLAS/DCS 30.10 2002

- Plug-on Board



Mother Board



40 ELMBs
+6 MBs bought