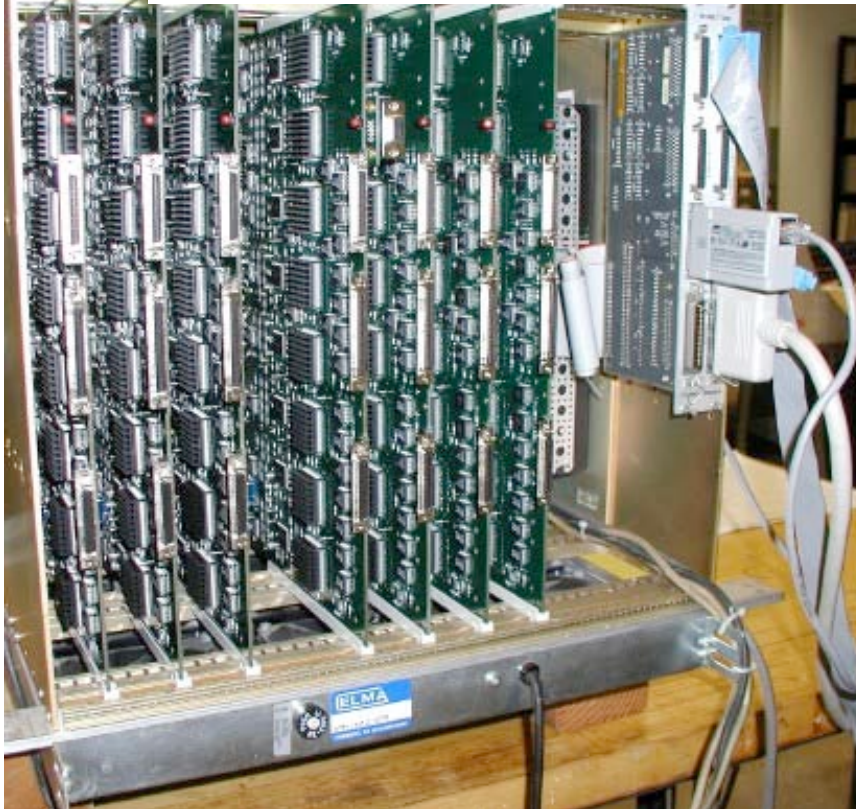




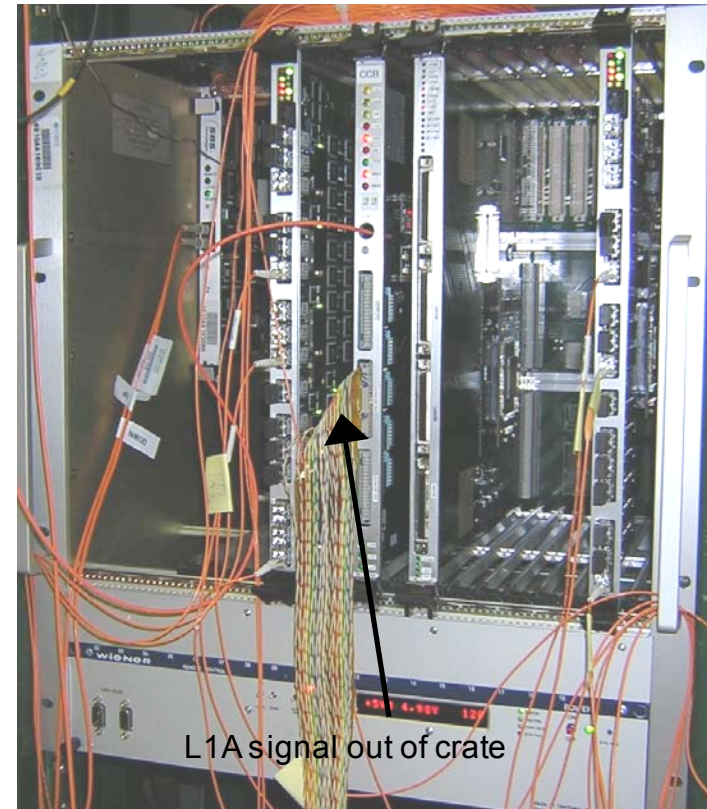
Trigger M&O Progress

-- Florida, Rice, UCLA, Wisconsin

Back of Regional Cal Trigger crate



Front of EMU Track-Finder crate



Fully functional EMU track finder trigger running at CERN

- Triggered EMU, RPC, HCAL in structured test beam

Fully functional complete Regional Cal Trigger Crate running at CERN

- Ready for integration with HCAL, ECAL, Global Cal Trigger



Trigger M&O Plans

-- Florida, Rice, UCLA, Wisconsin

Operate fully functional trigger electronics at CERN

- Both CAL and EMU trigger systems
- Employed in myriad tests & preparation activities

Tests in Electronics Integration Center

- Labs & row of racks for all electronics subsystems
- Test interfaces & integration as much as possible before move to USC55

Surface & "Magnet" tests in SX5

- With both HCAL and EMU
- More during magnet test
- Verify trigger functions & interfaces w/detectors on surface.
- Final trigger & timing infrastructure

Installation in Underground Counting Room (USC55)

- Expect start by Nov 30 '05 --"ready for crates"
 - Racks & Infrastructure installed

Trigger Upgrade R&D

- Start initial design work & technology investigations

