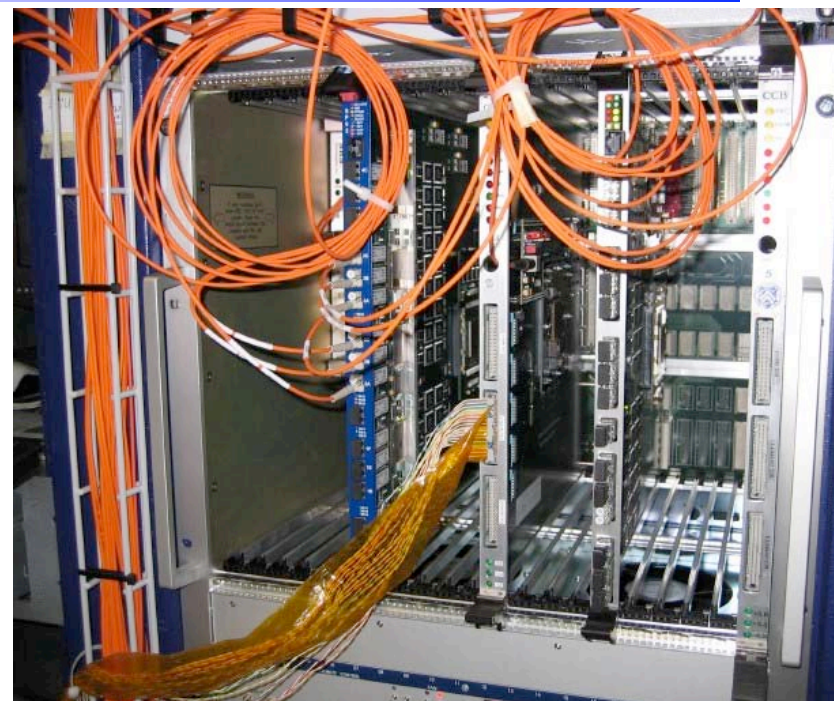




# Trigger M&O Progress

-- Florida, Rice, UCLA, Wisconsin



## Regional Calorimeter Trigger: operating 3 final production crates at CERN:

- Successful integration tests with Global Calorimeter Trigger, HCAL and ECAL trigger primitive logic

## EMU Trigger in Slice Test: cosmics running now!

- preparing full readout and self triggering of a whole trigger sector ( $60^\circ$ ).
- Since April 05 self-triggering with as close to nominal CMS setup as possible
  - used to pass data CSCs to global DAQ



# Trigger M&O Activity

## Operate fully functional trigger electronics at CERN

- Employed in myriad tests & preparation activities

## Tests in Electronics Integration Center

- Labs & row of racks for all electronics subsystems
- Test interfaces & integration as much as possible before move to USC55

## Surface & “Magnet” tests in SX5

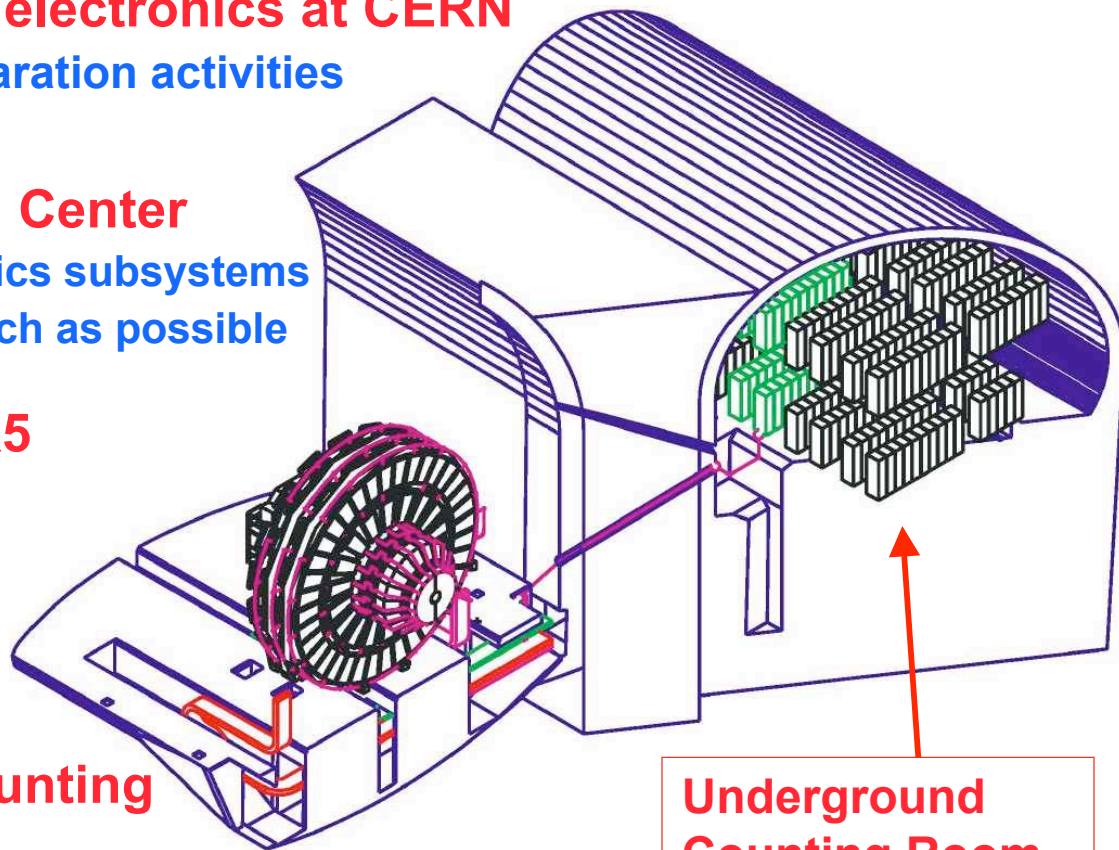
- With both HCAL and EMU
- More during magnet test
- Verify trigger functions & interfaces w/detectors on surface.

## Installation in Underground Counting Room (USC55)

- Expect start by April '05 --”ready for crates”
  - Racks, Infrastructure installed & operational

## Trigger Upgrade R&D

- Start initial design work & technology investigations



Underground  
Counting Room